



What is a MONOCHROMATIC color scheme?

Monochromatic color schemes are derived from a single base hue and extended using its shades, tones and tints. Tints are achieved by adding white and shades and tones are achieved by adding a darker color, gray or black.

# SHADES

base color  
+  
black



# TONES

base color  
+  
gray



# TINTS

base color  
+  
white



Canva



**Pure hue**



**Tints**

Mixed with white



**Shades**

Mixed with black



**Tones**

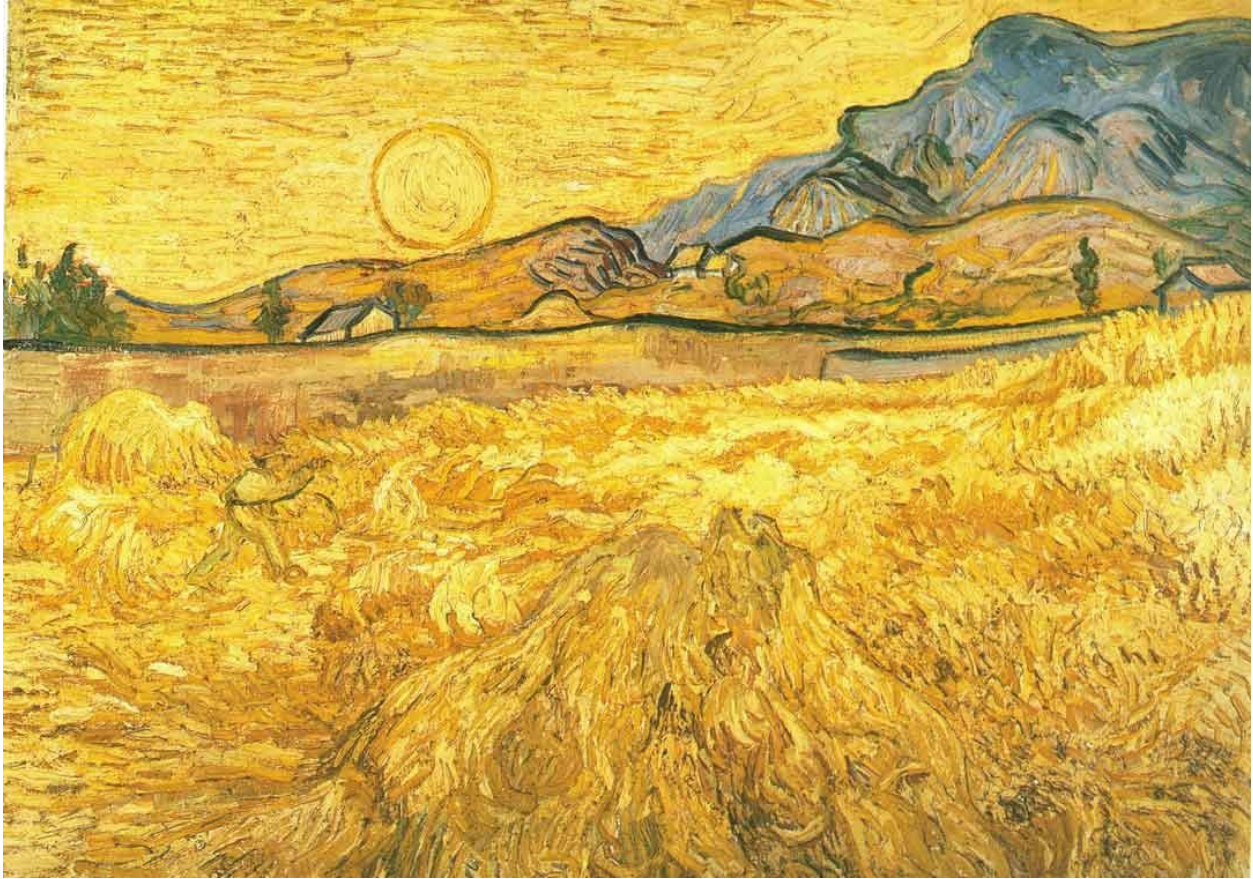
Mixed with gray



This painting is by Pablo Picasso



This painting is by Vincent Van Gogh



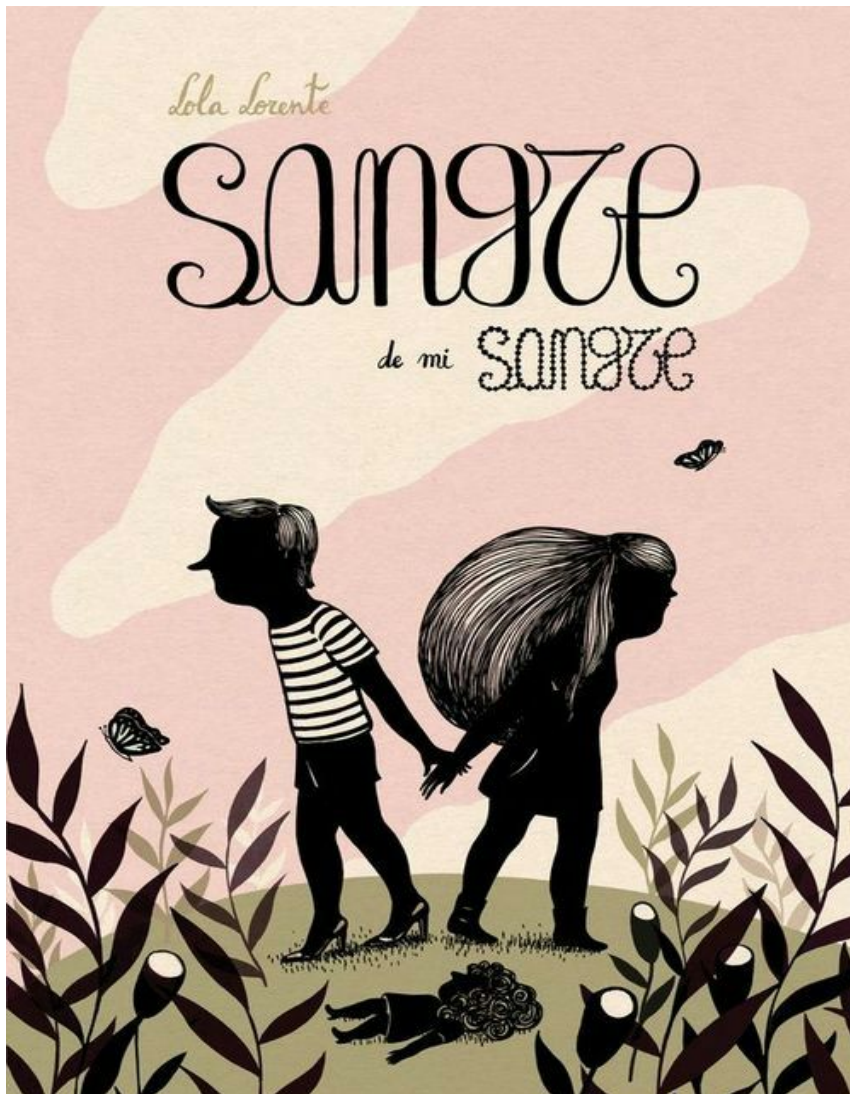
So is this one.

Did you notice the mountains are blue? This shows that a picture could be mostly or partially monochromatic and also be joined by another color too. The blue is a cool color which helps to add balance to the yellow's warmth and break up the monotony of it being purely yellow: this adds visual interest.

Look at this image below.

It is a black and white drawing that has been colored with two colors: red and green (complementary). The red and green have both been heavily TINTED with white, so that they are very pale.

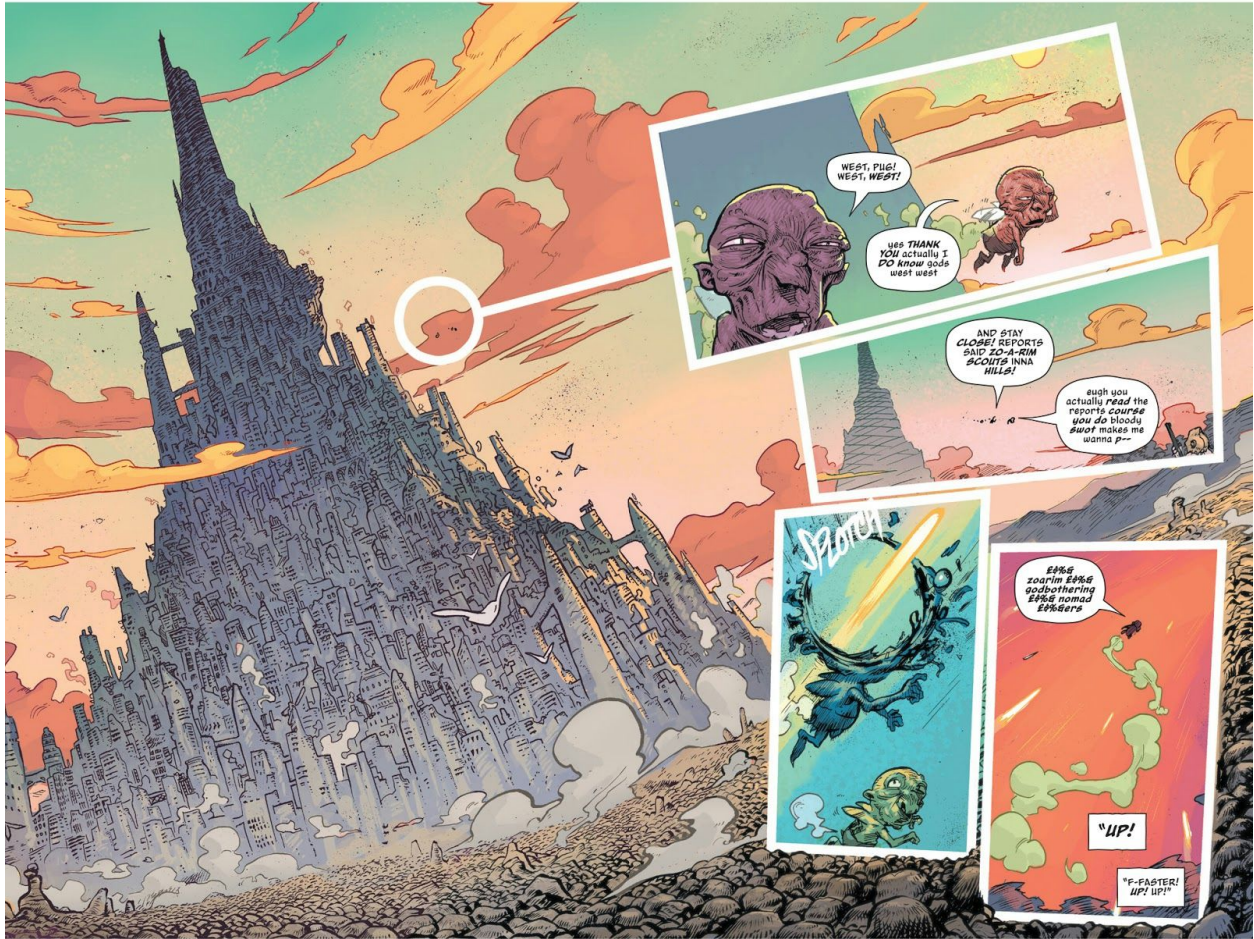
Also notice: the green is TONED with grey.



Observe the following examples of the creative and expressive power that color brings to these black and white drawings...



(art by Jeff Stokley)



Notice the warm colors vs. the cool colors. Notice the usage of gradients. Notice that some parts have tints and tones of the same color next to each other. Notice how the deeply saturated colors draw your eye to them. Notice the use of CONTRAST to make things dramatic and to create a clear and striking separation.

Okay, one last vocabulary word...

## CONTRAST

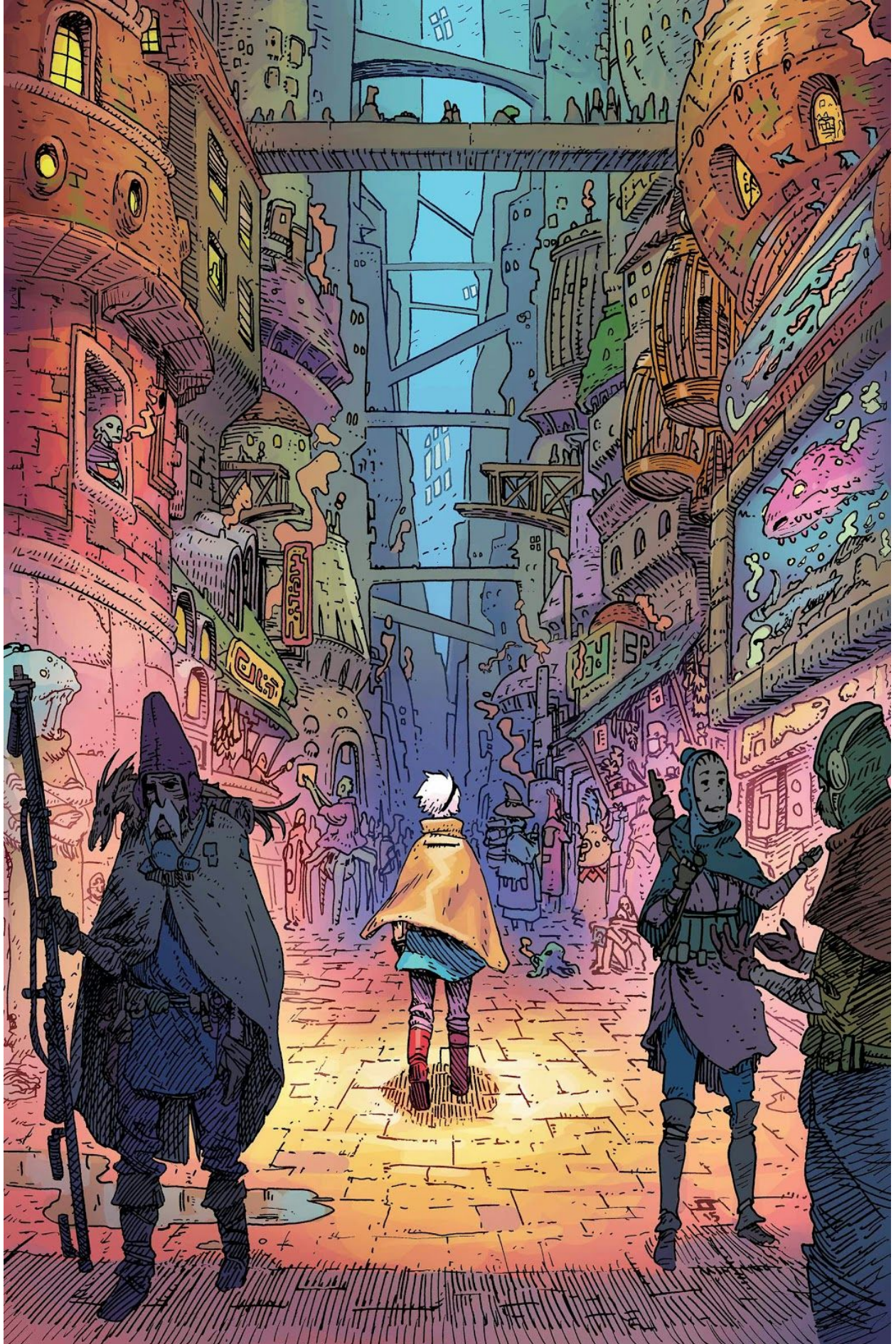
Contrast is the arrangement of opposite elements (light vs. dark colors, rough vs. smooth textures, large vs. small shapes, etc.) in a piece so as to create visual interest, excitement and drama.











Okay now...

Time for

## THE PROJECT

You will be provided with a jpeg of a black and white drawing.

It is your job to add the color.

It is up to you to apply the colors as you would like.

You can make the whole thing monochromatic, or perhaps just some of it.

You can choose a complementary color scheme for the whole image, or just part of it. It is entirely up to you.

What you will be graded on is the effort you put into making the colors work together to heighten the overall image's effect.